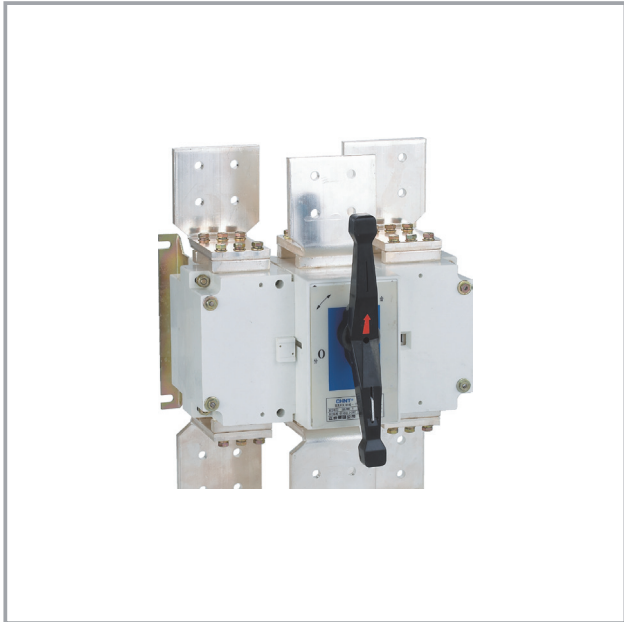


1. Datasheet



NH40 Switch Disconnecter

1. General

1.1 Application

NH40 series Switch-disconnector is applicable for AC 50Hz, rated voltage AC 690V and below, rated current up to 3150A.

In the industrial enterprise power distribution equipment, it can be used to connect and disconnect the circuit and isolate the power supply frequently, especially the 125A~630A can be used as frequent connected and broken.

1.2 Standard: IEC/EN60947-3.



2. Type designation

2.1 Ordering information

N H 40 - □ / □ □ □ □ □ F K

K means terminals is wiring buckle type(only for 16A~100A)

F means terminal protection type (only for 125A~250A)

II means miniature (only for central operation under 63A and side operation under 100A)

T means the frame is transparent (only for single-cast switch under 630A)

W means the handle is operated outside the cabinet.

Without W means the handle is operated inside the cabinet.

S means double-cast switch
Without S means double single-cast switch

C means front and side operation
Without C means front and central operation

3 means Three-pole, 31 means Three-pole contact with auxiliary contact opening and closing

4 means Four-pole, 41 means Four-pole contact with auxiliary contact opening and closing

Thermal current Ith (A)

Design Code

Indicating Disconnecter

Company code

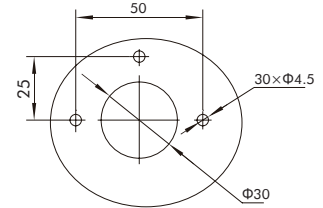
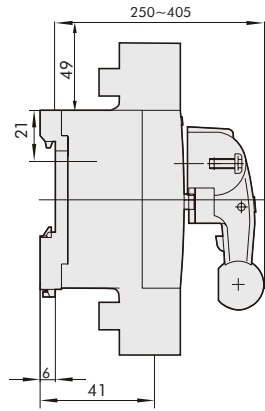
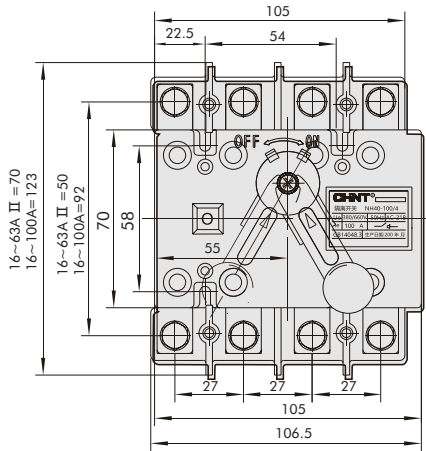
2.2 Technical data



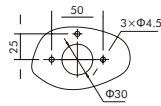
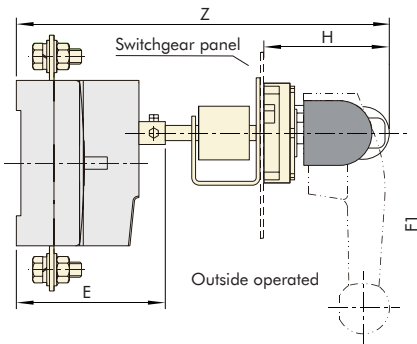
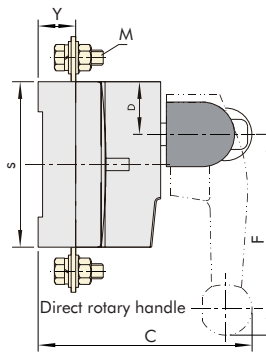
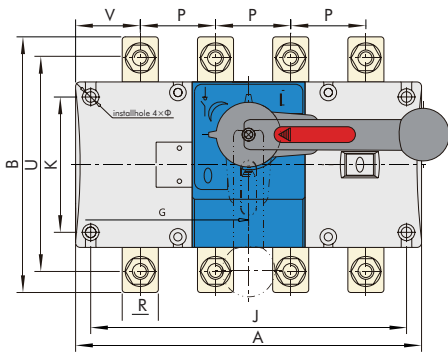
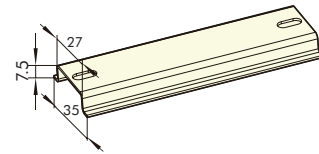
Thermal current Ith(A)	16	32	40	63	80	100	125	160	200	250	315	400	630	
Associated fuse rating(A)	16	32	40	63	80	100	125	160	200	250	315	400	630	
Rated insulation voltage(V)Ui	1000													
Rated current(A)	400VAC21B	16	32	40	63	80	100	125	160	200	250	315	400	630
	400VAC22B	-	-	-	-	-	-	125	125	200	250	315	400	630
	400V AC23A	-	-	-	-	-	-	125	160	200	250	315	400	630
	690V AC21B	16	32	40	63	63	63	125	160	200	250	315	400	500
	690VAC22B	-	-	-	-	-	-	100	100	160	160	200	250	315
690V AC23A	-	-	-	-	-	-	50	63	70	80	125	160	200	
Operation force(N)	30~50						40~60				65~100			



Thermal current Ith(A)	1000	1250	1600	2000	2500	3150	
Associated fuse rating(A)	1000	1250	2×800	2×1000	2×1250		
Rated insulation voltage(V)Ui	800						
Rated current(A)	400V AC23A	1000	1250	1600	2000	2500	3150
	690V AC21B	1000	1250	1600	2000	2500	3150
	690V AC22B	800	800	1000	1600	1600	2000
	690V AC23A	800	800	800	1000	1000	1250
Operation force(N)	200~300						



Mounting dimension of externally mounted handle



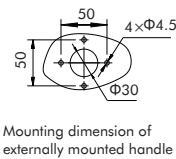
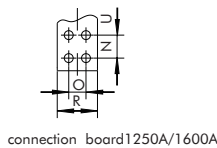
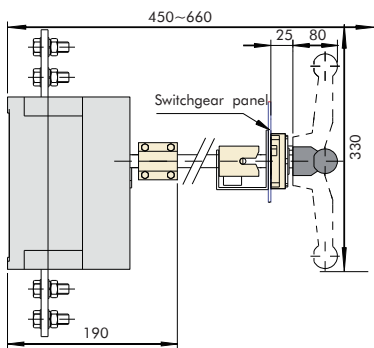
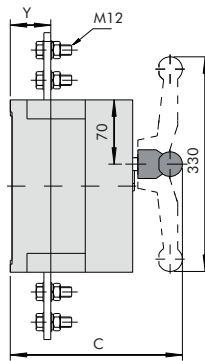
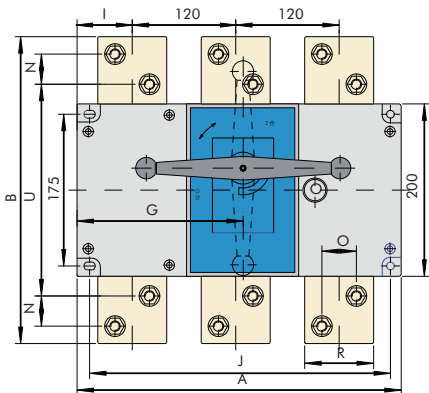
Mounting dimension of extended rotary handle

Mounting dimension of NH40 switch disconnecter

Specification	NH40- □ NH40- □□ /W Overall and mounting dimensions (mm)																		
Current	A	B	C	D	E	F	Φ	J	H	K	G	P	R	S	U	M	V	Y	Z
125A/3	140	135	130	27	93	105	5.5	120	85	65	55	36	18	85	115	8	37	24	355~460
160A/3	140	135	130	27	93	105	5.5	120	85	65	55	36	20	85	115	8	38	24	355~460
125A/4	170	135	130	27	93	105	5.5	150	85	65	85	36	18	85	115	8	31	24	355~460
160A/4	170	135	130	27	93	105	5.5	150	85	65	85	36	20	85	115	8	32	24	355~460
200A/3	180	170	145	35	103	135	6.5	160	85	90	60	50	25	110	142	10	43	25	365~470
250A/3	180	170	145	35	103	135	6.5	160	85	90	60	50	25	110	142	10	43	25	365~470
200A/4	230	170	145	35	103	135	6.5	210	85	90	110	50	25	110	142	10	43	25	365~470
250A/4	230	170	145	35	103	135	6.5	210	85	90	110	50	25	110	142	10	43	25	365~470
315A/3	230	240	195	50	135	160	7	210	105	140	84	65	32	160	205	12	52	37	440~555
400A/3	230	240	195	50	135	160	7	210	105	140	84	65	35	160	205	12	53	37	440~555
630A/3	230	260	195	50	135	160	7	210	105	140	84	65	40	160	220	12	52	37	440~555
315A/4	290	240	195	50	135	160	7	270	105	140	144	65	32	160	205	12	47	37	440~555
400A/4	290	240	195	50	135	160	7	270	105	140	144	65	35	160	205	12	48	37	440~555
630A/4	290	260	195	50	135	160	7	270	105	140	144	65	40	160	220	12	47	37	440~555

2.3.3 Overall and mounting dimensions(1000A-1600A)

1000A~1600A with direct rotary handle

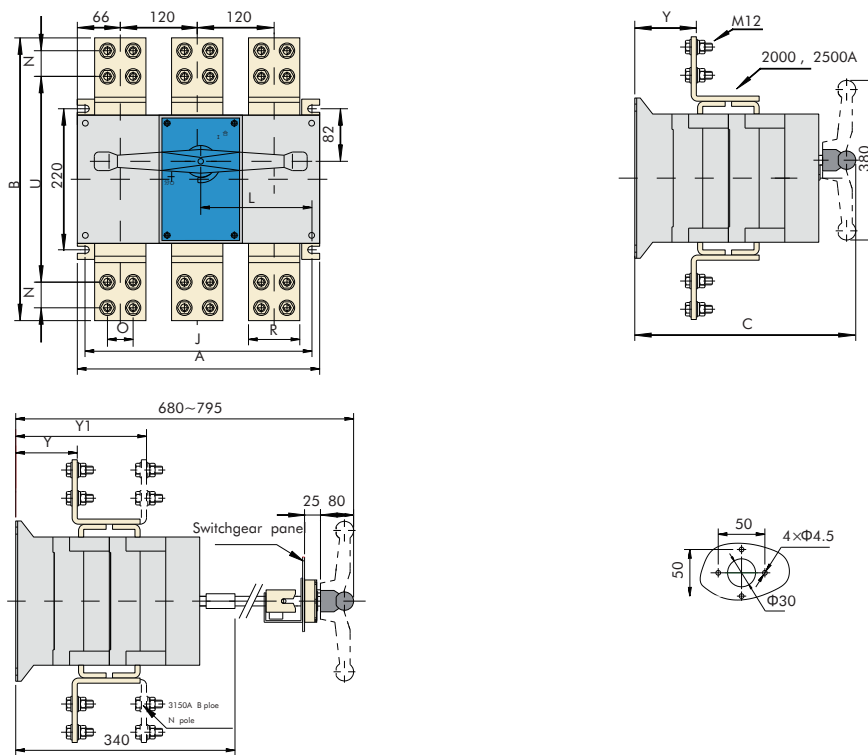


Mounting dimension of NH40 switch disconnecter

Specification	NH40- □ NH40- □□ /W Overall and mounting dimensions (mm)										
Current	A	B	C	G	I	J	N	R	O	U	Y
1000A/3	378	316	240	129.5	66	353	22	60	32	236	48
1250A/3	378	356	240	129.5	66	353	35	70	34	246	48
1600A/3	378	356	240	129.5	66	353	35	80	40	246	48
1000A/4	492	316	240	252.5	61	468	22	60	32	236	48
1250A/4	492	356	240	252.5	61	468	35	70	34	246	48
1600A/4	492	356	240	252.5	61	468	35	80	40	246	48

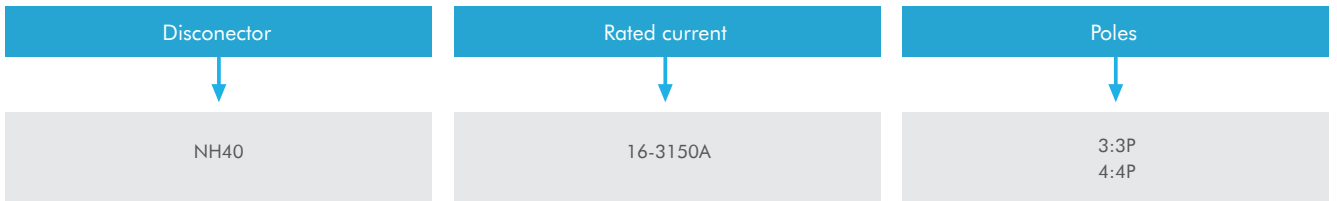
2.3.4 Overall and mounting dimensions(2000A-3150A)

Operation outside the switchgear Remark:
C is the longest one among outside operation dimensions.

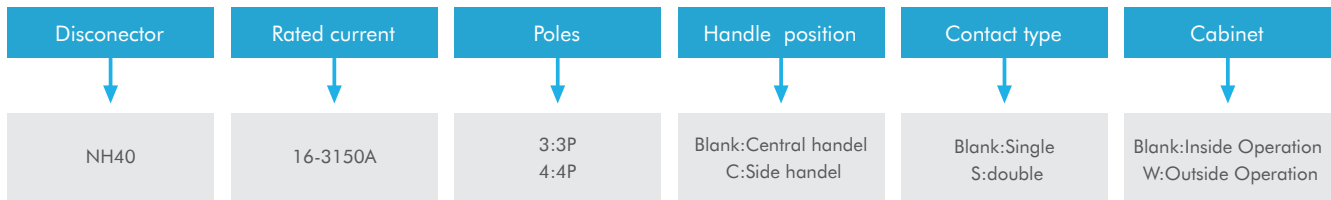


Mounting dimension of NH40 inside operation and NH40 switch disconnecter

Specification	NH40- □ NH40- □□ /W Overall and mounting dimensions (mm)										
Current	A	B	C	J	L	N	O	U	R	Y	Y1
2000A/3	378	430	374	353	172.5	40	40	310	80	105	—
2500A/3	378	430	374	353	172.5	40	40	310	80	105	—
3150A/3	378	510	374	353	172.5	50	50	360	120	105	210
2000A/4	492	430	374	473	236.5	40	40	310	80	105	—
2500A/4	492	430	374	473	236.5	40	40	310	80	105	—
3150A/4	492	510	374	473	236.5	50	50	360	120	105	210



	Frame	In	Description	Code	Price	QTY
3P	3P	16A	NH40-16/3	393524		
	3P	32A	NH40-32/3	393525		
	3P	40A	NH40-40/3	393526		
	3P	63A	NH40-63/3	393527		
	3P	80A	NH40-80/3	393528		
	3P	100A	NH40-100/3	393529		
	3P	125A	NH40-125/3	393261		
	3P	160A	NH40-160/3	393262		
	3P	200A	NH40-200/3	393263		
	3P	250A	NH40-250/3	393264		
	3P	315A	NH40-315/3	393265		
	3P	400A	NH40-400/3	393266		
	3P	630A	NH40-630/3	393267		
	3P	1000A	NH40-1000/3	393268		
	3P	1250A	NH40-1250/3	393269		
	3P	1600A	NH40-1600/3	393270		
	3P	2000A	NH40-2000/3	393271		
	3P	2500A	NH40-2500/3	393272		
	3P	3150A	NH40-3150/3	393273		
4P	4P	16A	NH40-16/4	393530		
	4P	32A	NH40-32/4	393531		
	4P	40A	NH40-40/4	393532		
	4P	63A	NH40-63/4	393533		
	4P	80A	NH40-80/4	393534		
	4P	100A	NH40-100/4	393535		
	4P	125A	NH40-125/4	393358		
	4P	160A	NH40-160/4	393359		
	4P	200A	NH40-200/4	393360		
	4P	250A	NH40-250/4	393361		
	4P	315A	NH40-315/4	393362		
	4P	400A	NH40-400/4	393363		
	4P	630A	NH40-630/4	393364		
	4P	1000A	NH40-1000/4	393365		
	4P	1250A	NH40-1250/4	393366		
	4P	1600A	NH40-1600/4	393367		
	4P	2000A	NH40-2000/4	393368		
	4P	2500A	NH40-2500/4	393369		
	4P	3150A	NH40-3150/4	393370		



	Poles	In	Description	Code	Price	QTY
3P	3P	16A	NH40-16/3CS	393540		
	3P	32A	NH40-32/3CS	393541		
	3P	40A	NH40-40/3CS	393542		
	3P	63A	NH40-63/3CS	393543		
	3P	80A	NH40-80/3CS	393544		
	3P	100A	NH40-100/3CS	393545		
	3P	125A	NH40-125/3CS	393351		
	3P	160A	NH40-160/3CS	393371		
	3P	200A	NH40-200/3CS	393372		
	3P	250A	NH40-250/3CS	393373		
	3P	315A	NH40-315/3CS	393374		
	3P	400A	NH40-400/3CS	393375		
	3P	630A	NH40-630/3CS	393376		
	3P	1000A	NH40-1000/3CS	393377		
	3P	1250A	NH40-1250/3CS	393378		
	3P	1600A	NH40-1600/3CS	393379		
	3P	2000A	NH40-2000/3CS	393380		
	3P	2500A	NH40-2500/3CS	393381		
	3P	3150A	NH40-3150/3CS	393382		
4P	4P	16A	NH40-16/4CS	393546		
	4P	32A	NH40-32/4CS	393547		
	4P	40A	NH40-40/4CS	393548		
	4P	63A	NH40-63/4CS	393549		
	4P	80A	NH40-80/4CS	393550		
	4P	100A	NH40-100/4CS	393551		
	4P	125A	NH40-125/4CS	393352		
	4P	160A	NH40-160/4CS	393383		
	4P	200A	NH40-200/4CS	393384		
	4P	250A	NH40-250/4CS	393353		
	4P	315A	NH40-315/4CS	393414		
	4P	400A	NH40-400/4CS	393354		
	4P	630A	NH40-630/4CS	393355		
	4P	1000A	NH40-1000/4CS	393356		
	4P	1250A	NH40-1250/4CS	393415		
	4P	1600A	NH40-1600/4CS	393357		
	4P	2000A	NH40-2000/4CS	393385		
	4P	2500A	NH40-2500/4CS	393386		
	4P	3150A	NH40-3150/4CS	393387		

	Poles	In	Description	Code	Price	QTY
3P	3P	16A	NH40-16/3CSW	393552		
	3P	32A	NH40-32/3CSW	393553		
	3P	40A	NH40-40/3CSW	393554		
	3P	63A	NH40-63/3CSW	393555		
	3P	80A	NH40-80/3CSW	393556		
	3P	100A	NH40-100/3CSW	393557		
	3P	125A	NH40-125/3CSW	393388		
	3P	160A	NH40-160/3CSW	393389		
	3P	200A	NH40-200/3CSW	393390		
	3P	250A	NH40-250/3CSW	393391		
	3P	315A	NH40-315/3CSW	393392		
	3P	400A	NH40-400/3CSW	393393		
	3P	630A	NH40-630/3CSW	393394		
	3P	1000A	NH40-1000/3CSW	393395		
	3P	1250A	NH40-1250/3CSW	393396		
	3P	1600A	NH40-1600/3CSW	393397		
	3P	2000A	NH40-2000/3CSW	393398		
	3P	2500A	NH40-2500/3CSW	393399		
3P	3150A	NH40-3150/3CSW	393400			
4P	4P	16A	NH40-16/4CSW	393558		
	4P	32A	NH40-32/4CSW	393559		
	4P	40A	NH40-40/4CSW	393560		
	4P	63A	NH40-63/4CSW	393561		
	4P	80A	NH40-80/4CSW	393562		
	4P	100A	NH40-100/4CSW	393563		
	4P	125A	NH40-125/4CSW	393401		
	4P	160A	NH40-160/4CSW	393402		
	4P	200A	NH40-200/4CSW	393403		
	4P	250A	NH40-250/4CSW	393404		
	4P	315A	NH40-315/4CSW	393405		
	4P	400A	NH40-400/4CSW	393406		
	4P	630A	NH40-630/4CSW	393407		
	4P	1000A	NH40-1000/4CSW	393408		
	4P	1250A	NH40-1250/4CSW	393409		
	4P	1600A	NH40-1600/4CSW	393410		
	4P	2000A	NH40-2000/4CSW	393411		
	4P	2500A	NH40-2500/4CSW	393412		
4P	3150A	NH40-3150/4CSW	393413			